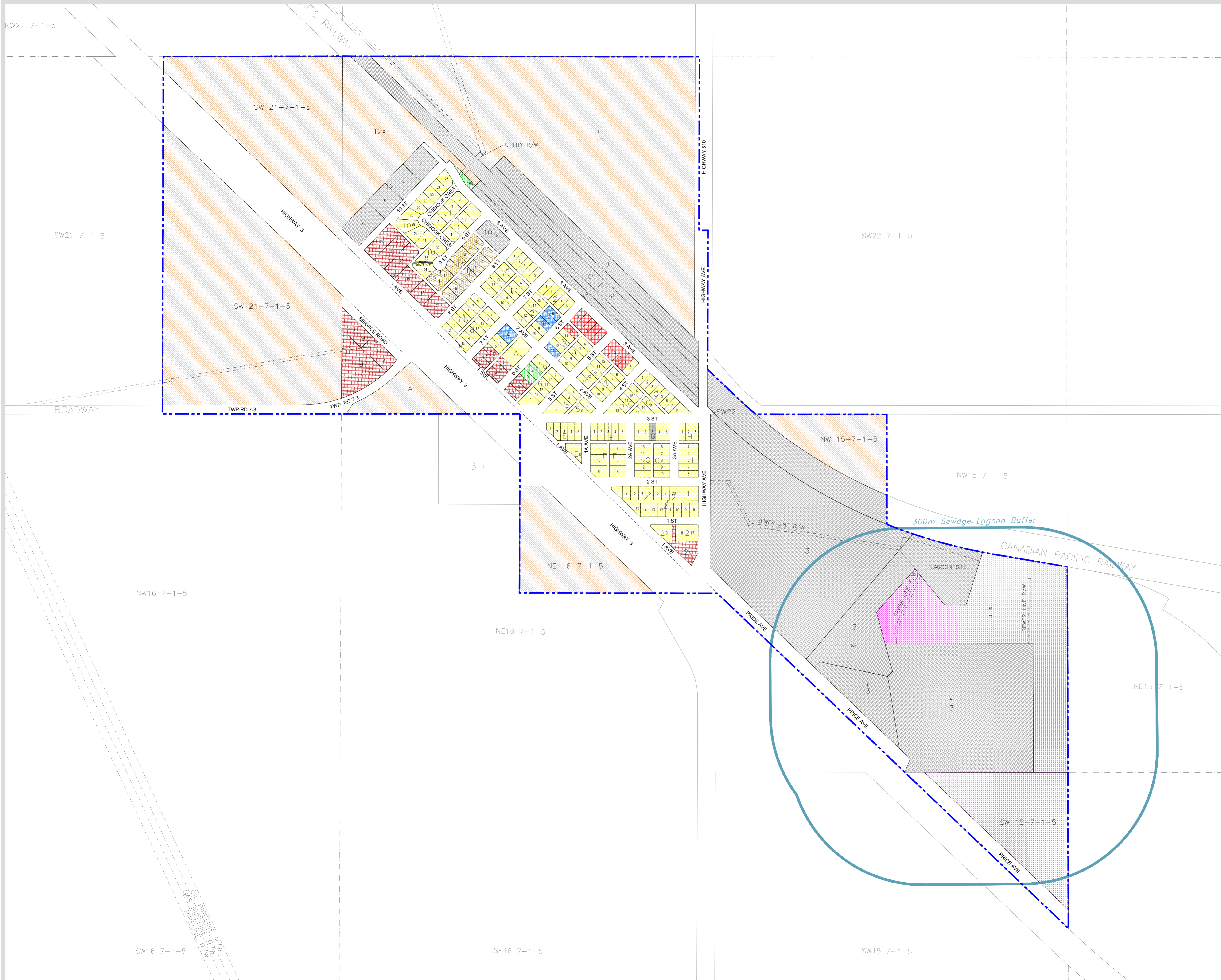


VILLAGE OF COWLEY
 Ptn's Of SW 15, NW 15, NE 16, SE 21
 All Of SW 21 In Twp 7, Rge 1, W5M
 - - - - - VILLAGE BOUNDARY



VILLAGE OF COWLEY
LAND USE DISTRICTS
 BYLAW NO. 352
 DATE: SEPTEMBER 15, 1998
 AMENDED TO BYLAW NO. 432

- | | | |
|--|------------------------------------|-----|
| | General Residential | R1 |
| | Mobile Home Residential | R2 |
| | Downtown/Retail Commercial | C1 |
| | Highway And General Commercial | C2 |
| | General Industrial And Warehousing | I |
| | Parks And Open Space | POS |
| | Public And Institutional | PI |
| | Transitional/Urban Reserve | TUR |
| | Direct Control | DC |
| | Direct Control 1 | DC1 |

MAP PREPARED BY:
 OLDMAN RIVER REGIONAL SERVICES COMMISSION
 3105 16th AVENUE NORTH, LETHBRIDGE, ALBERTA T1H 5E8
 TEL. 403-329-1344
 "NOT RESPONSIBLE FOR ERRORS OR OMISSIONS"